

# RWGUSEV

## HOW TO USE VECTOR TEXT EFFECT

Created By:

Gusev Aleksandr Sergeevich  
Designer



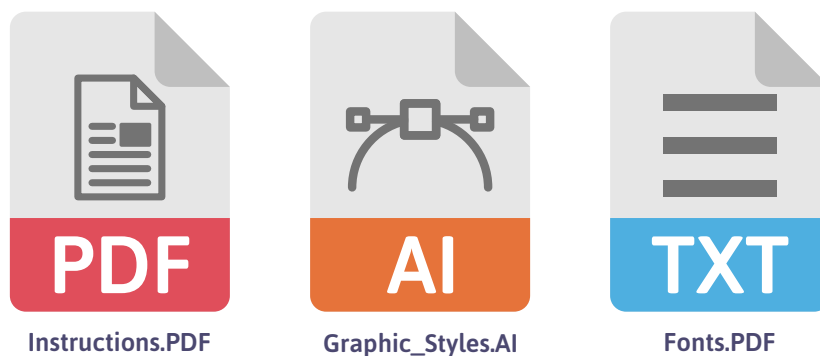
RWGUSEV.COM

RWGUSEV© / All Rights Reserved

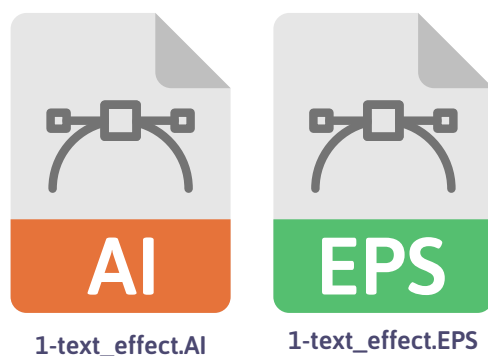
- 1 The archive contains 1 text effect in AI and EPS format. You'll find two folders: HELP, SOURCE.



- 2 The "HELP" folder contains: step-by-step instructions, a set of graphic styles for Adobe Illustrator and information about the font used.



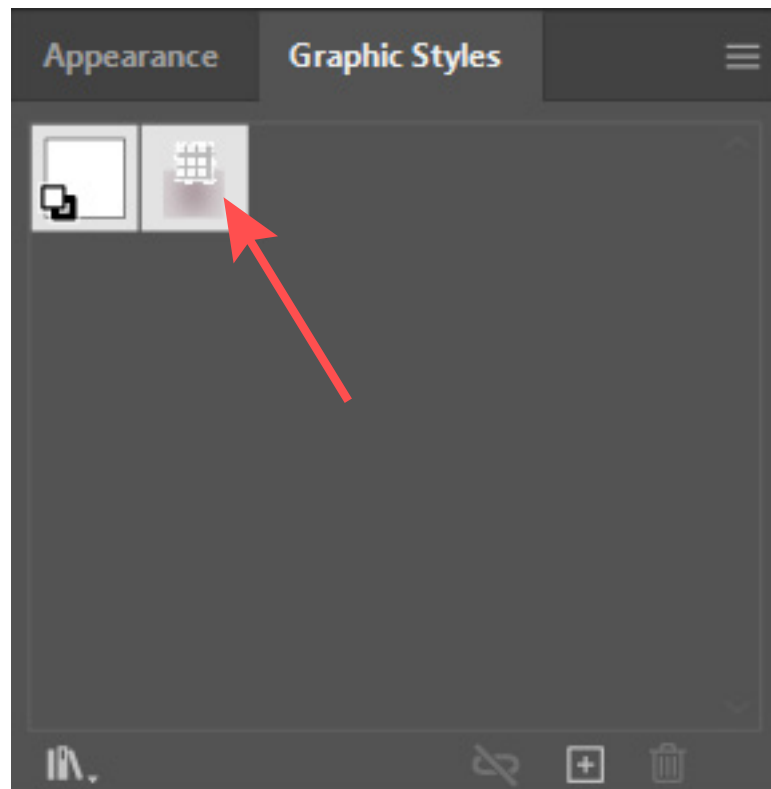
- 3 The "SOURCE" folder contains 1 text effect. Let's open one of the files. You can use a file with the extension .AI or .EPS.



- 4 This is our vector text effect. You may have purchased other effect. The principle of working with a text effect is the same for all products.



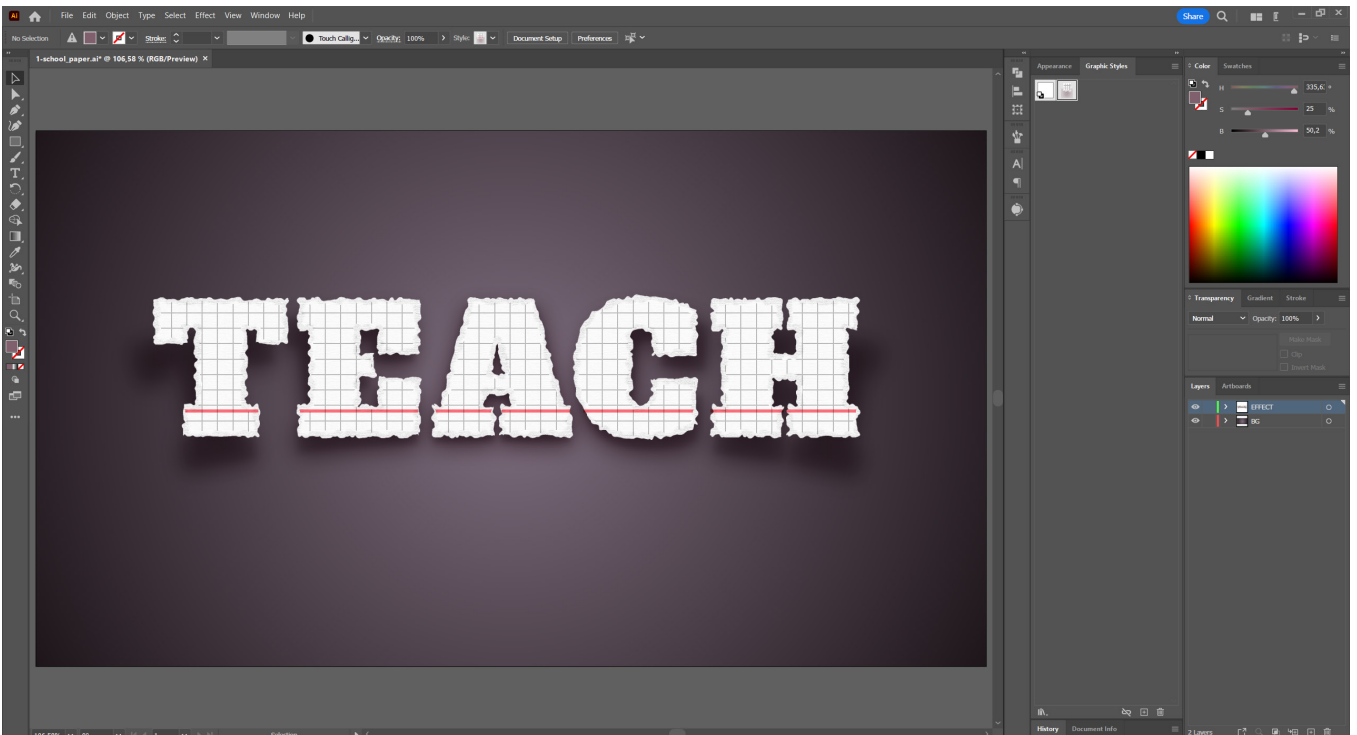
- 5 Notice that in the .AI and .EPS file the effect have been added to the "Graphic Styles" panel.



6 Just double click on the text with the effect.



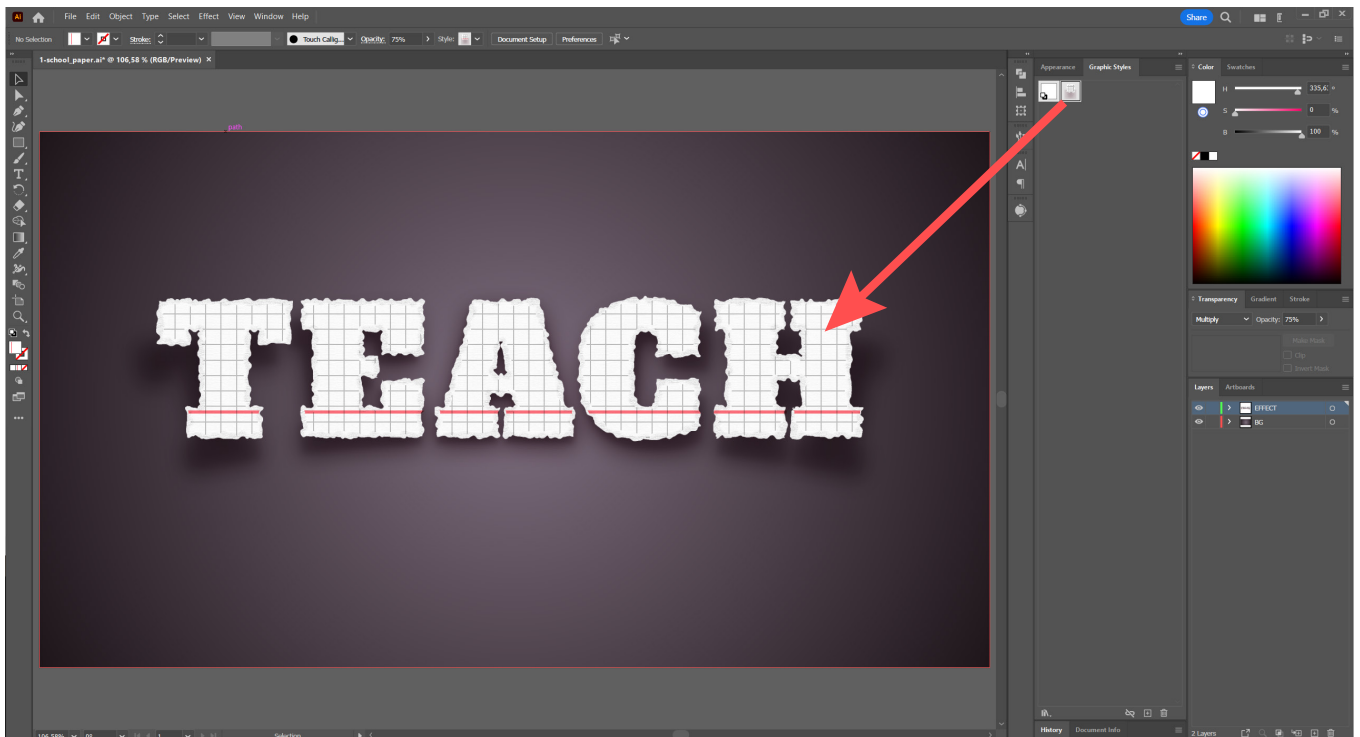
7 Type your text and the text effect will be applied!



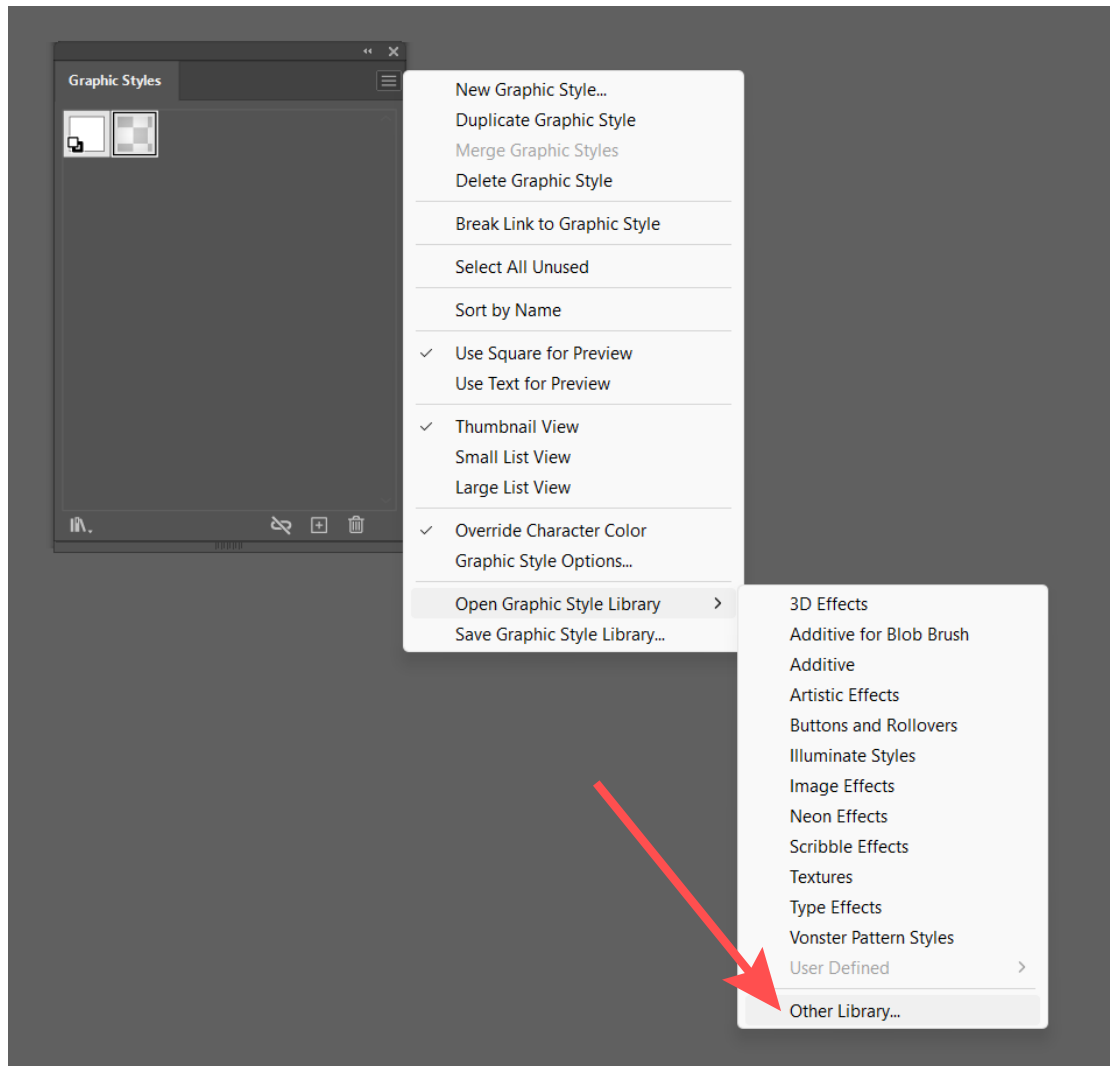
8 There is a second way. Type any text.



9 Select the text and click on the effect icon in the "Graphic Styles" panel. Great!



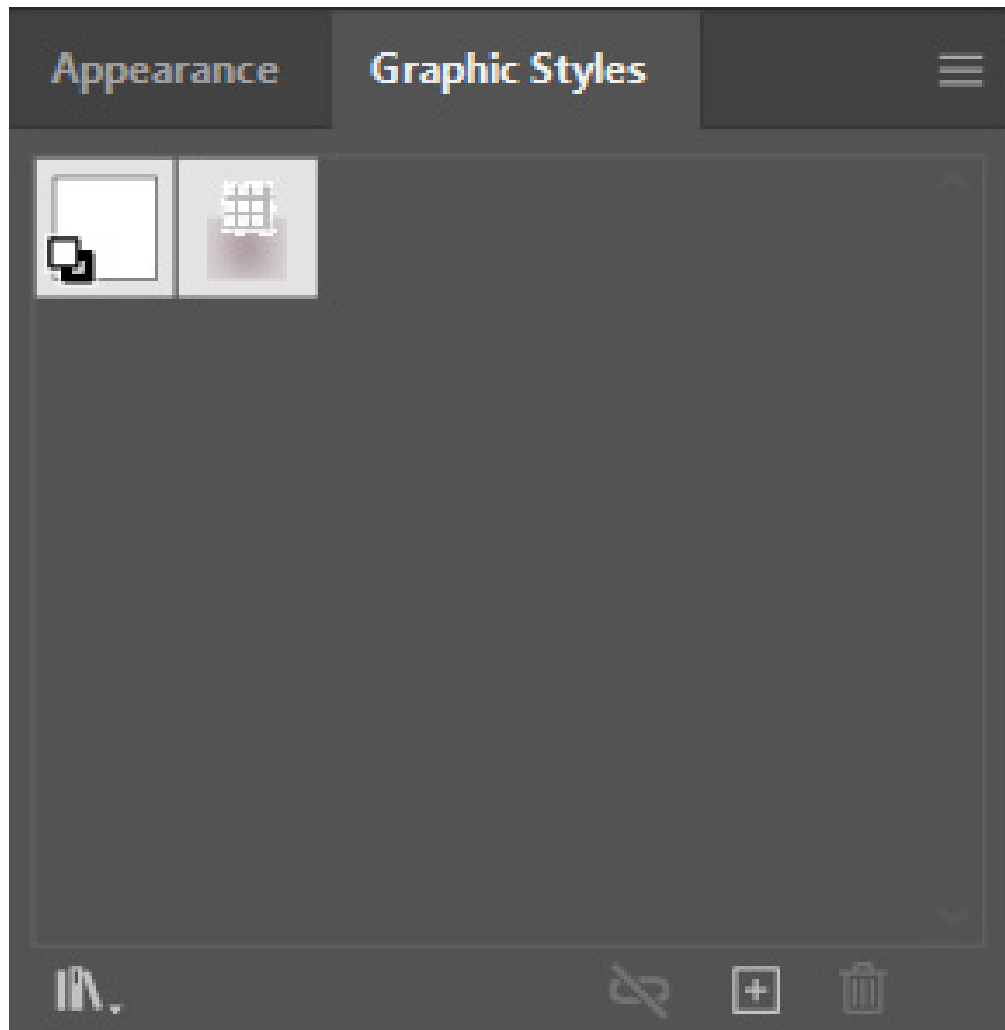
- 10** If there is no effect in "Graphic Styles", you can add one.  
 Find the "Graphic Styles" panel.  
 Click on three horizontal lines -> Open Graphic Style Library->Other Library.



- 11** Find the "Graphic Styles" file in the purchased product.



- 12 The selected effects will open in a new window.

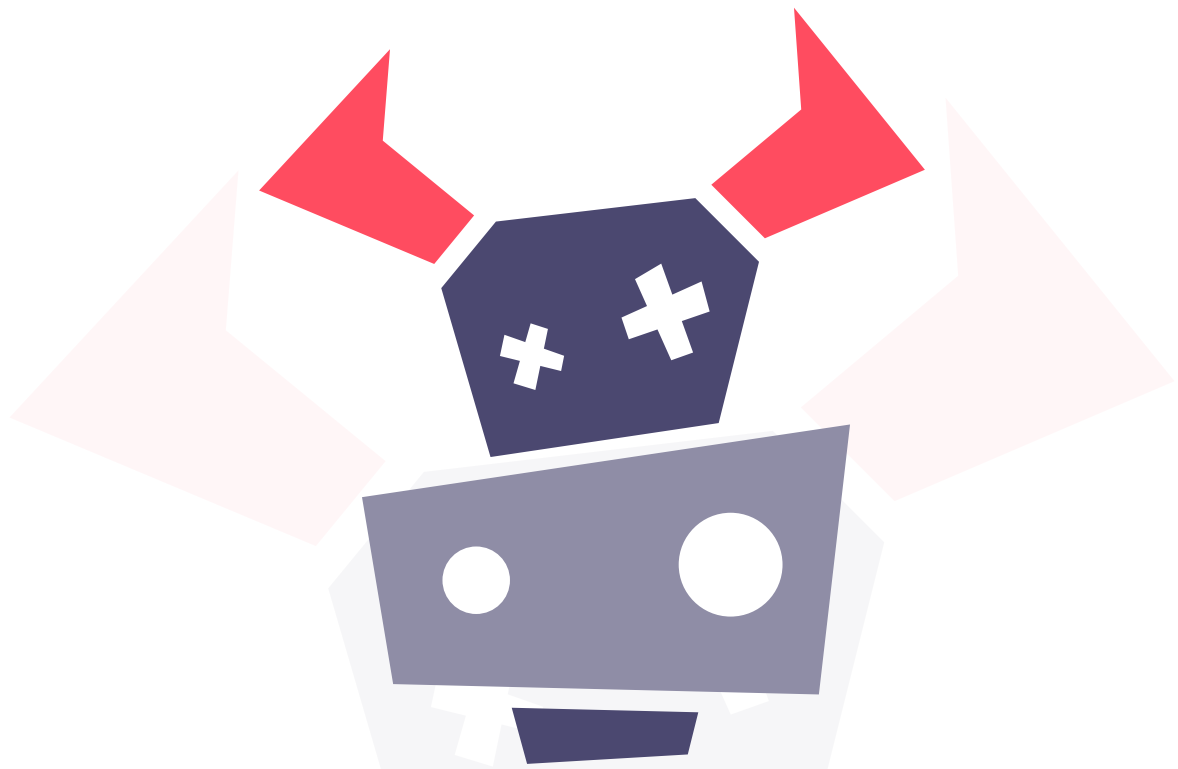


- 13 Repeat steps 8,9 to apply the effect to any text.

- 14 Instead of an .AI file, you can use an .EPS file.

- 15 Watch video tutorial <https://youtu.be/-s7h45oSY30>





**RWGUSEV**

**Thank you for your attention!  
Best Regards, Gusev Aleksandr**

**RWGUSEV.COM**

**RWGUSEV© / All Rights Reserved**