

RWGUSEV

HOW TO USE RASTER TEXT EFFECT

Created By:

Gusev Aleksandr Sergeevich
Designer



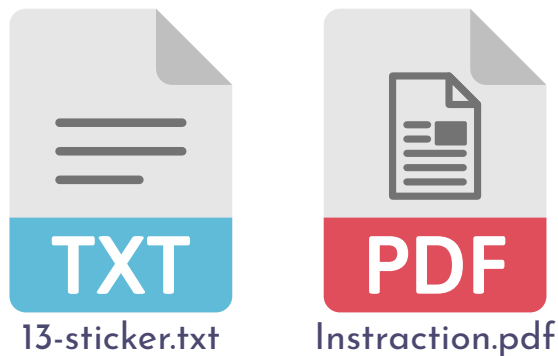
RWGUSEV.COM

RWGUSEV© / All Rights Reserved

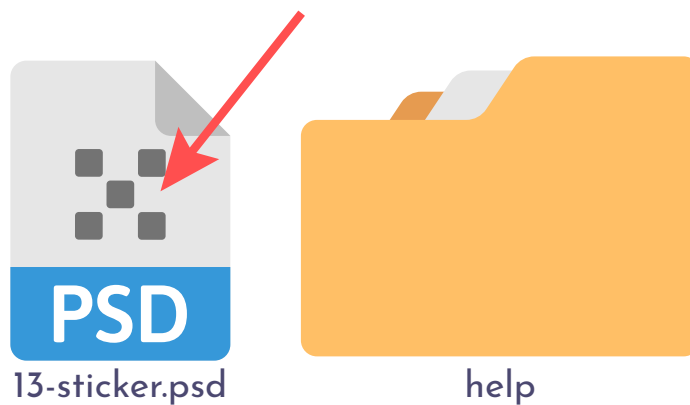
- 1 Every ZIP archive contains PSD file and "Help" folder.



- 2 The "help" folder contains a text file with information about the font and a PDF file with instructions.



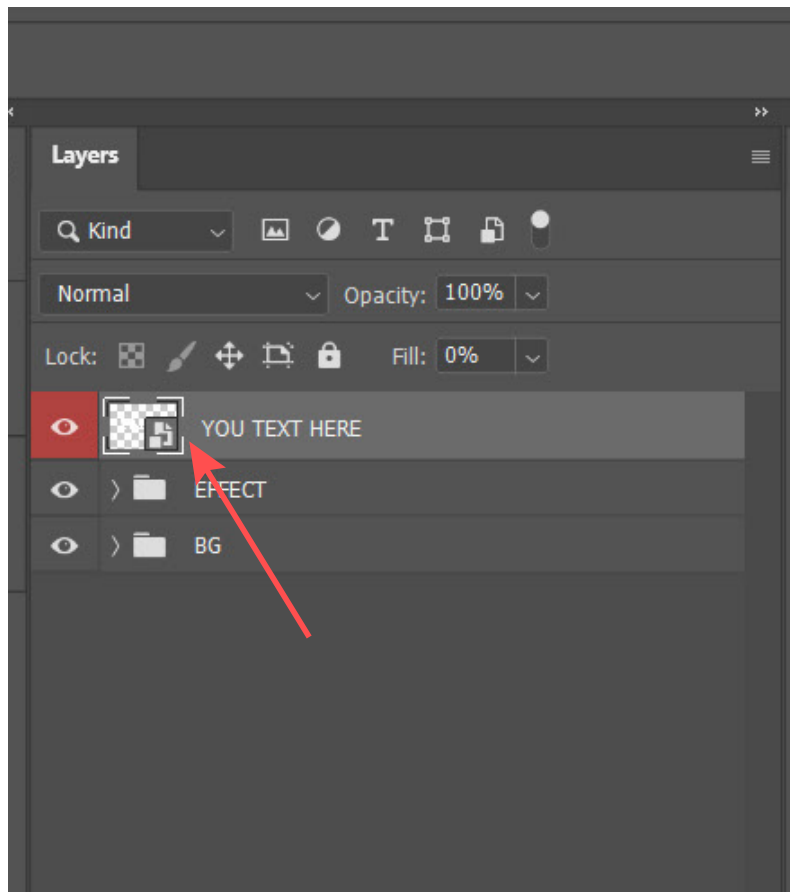
- 3 Open the text effect PSD file.



- 4 This is our raster text effect. You may have purchased other effect. The principle of working with a text effect is the same for all products.



- 5 In the "Layers" panel, double click on the "Your Text Here" layer (highlighted in red).



6 A new window will open with text.



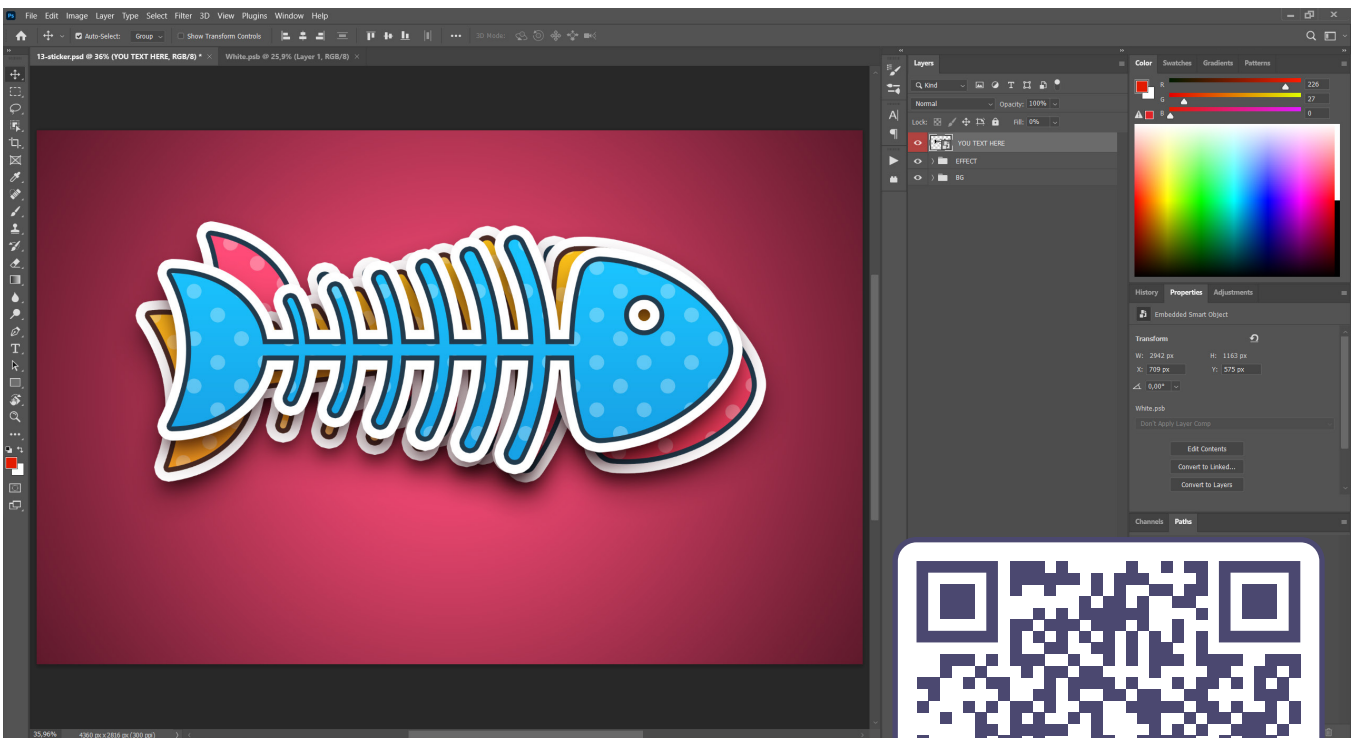
7 Write your text and save changes (CTRL+S).



8 Go to the previous tab. Our effect is applied to the new text. Ready!

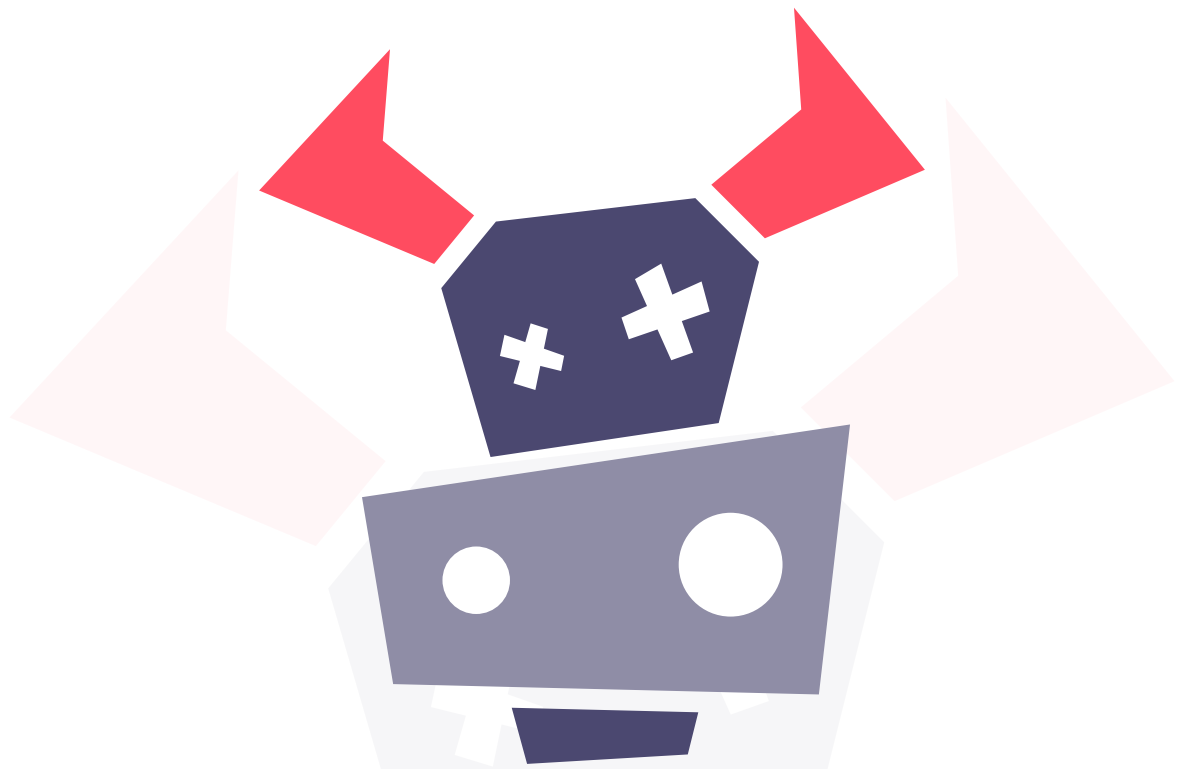


9 Instead of typing text, you can use a bitmap, logo, or icon.



10 Watch video tutorial youtu.be/WN7rERNnfWc





RWGUSEV

**Thank you for your attention!
Best Regards, Gusev Aleksandr**

RWGUSEV.COM

RWGUSEV© / All Rights Reserved